

Self-registration of asylum seekers

15 May 2025

Product Owner Warda Holm

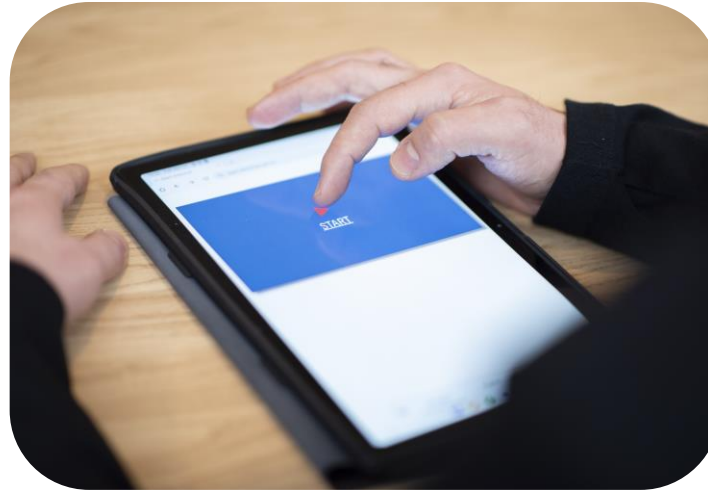
COA International Exchange Event



Agenda



Background



Self-registration
tool



Key benefits

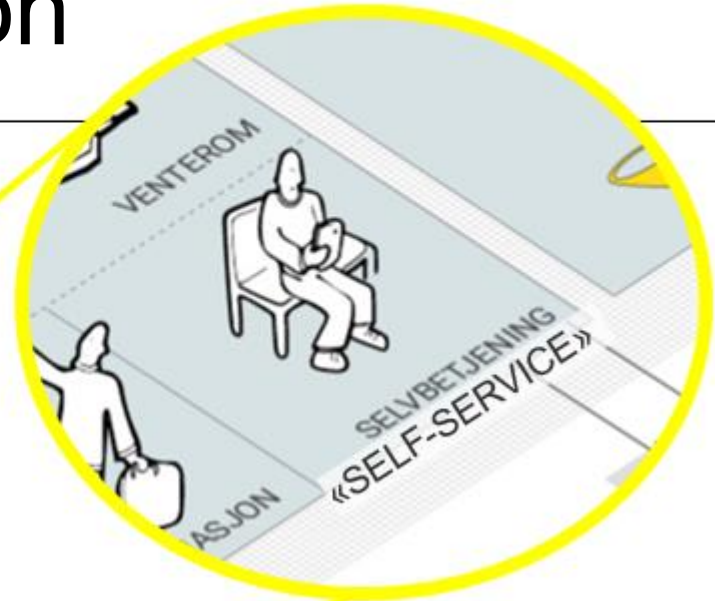
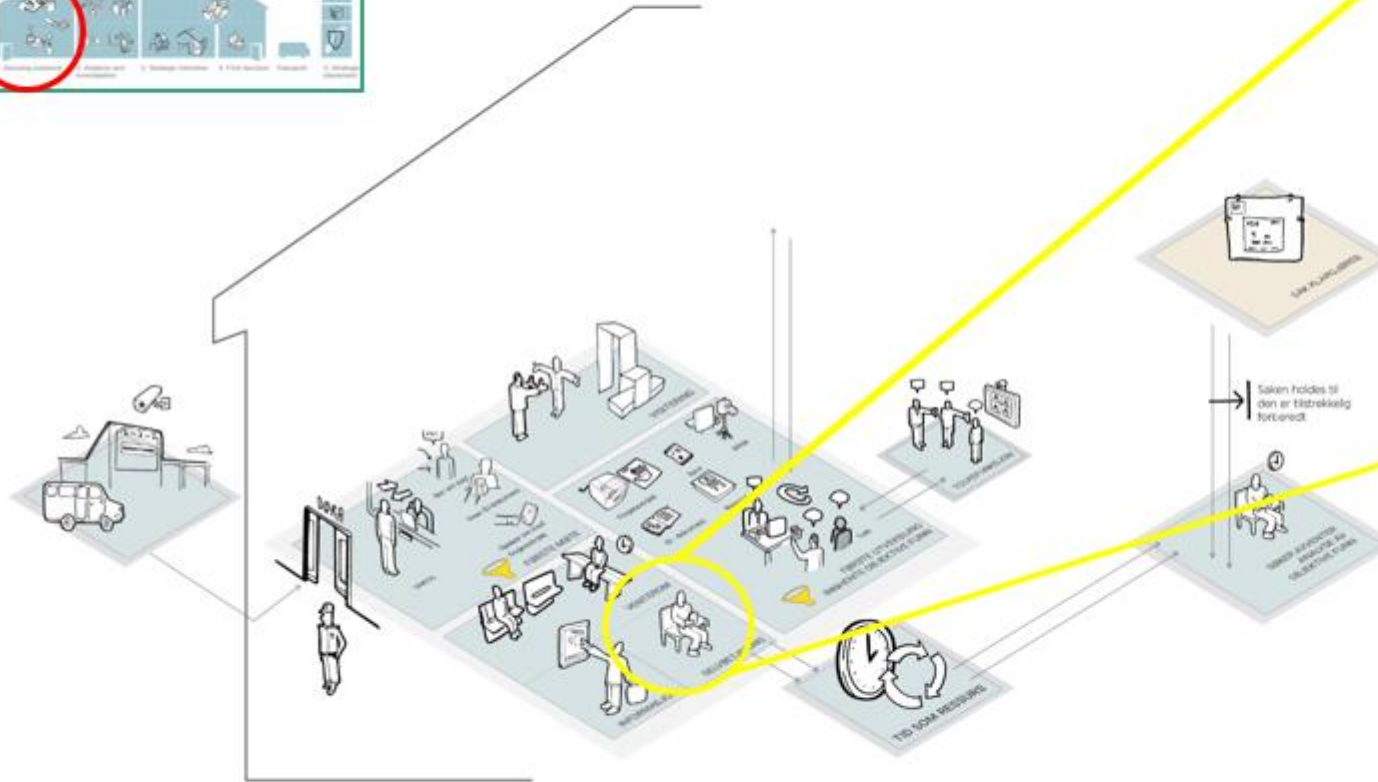
Background

Background – 2015/2016



- Serious challenges in registering asylum seekers
- Need for less pressure on case workers and interpreters
- Need for reducing manual registrations
 - Pilot in 2017
 - Implemented in 2020

Phase 1: Reception and registration



Self-registration tool

Demo video

Automatic conversion of answers written in the Arabic, Persian or the Cyrillic alphabet into the Latin alphabet.

Cancel registration
(Arabic)

- You have used the online Persian or Cyrillic converter in the free test fields. In the fields below you can use the automatic conversion of your answers in the Latin alphabet.
- If you have submitted a formal document or other ID documents whose data have to be written in Latin letters, we will register your name in our computer database as it is written in the document.
- If you have not submitted such ID documents with us yet, we will suggest also make it in our computer system, as described in the fields on this page.
- If you disagree with the spelling, you can send the points in the Latin writing your answers.

First name

Family name

Family name

Family name

What is the name of this place or institution where you were born?

Country

You can go back to the previous page and change the setting in the Persian or Cyrillic alphabet. The relevant fields are marked in the fields above with their change.

You can also return to the previous page and use Latin letters in the free test fields.

Processing Done

Integrations



Key facts - registrations



Total registrations 72 000



33 minutes on average



98% registered in 2024



68% self-registered in 2024

Key benefits

Gains



Activates
asylum seeker



Standardized
information



Reduced
manual tasks



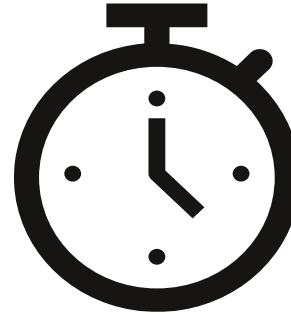
Tool for
screening



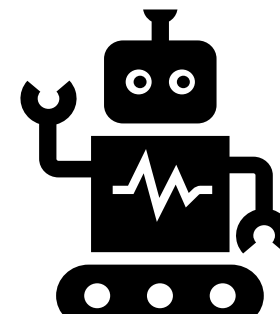
Rapid data
transfer



Scalable
solution



Time saving



Enables
automation

Questions?



UDI



Utlendingsdirektoratet
Norwegian Directorate
of Immigration

www.udi.no